

□□: □□□□ PC

□□: 9V 2A

□□□5V 1A 9V1A

□□□5W 7.5W 10W

□□□□2-20MM

□□□□: $\geq 70\%$

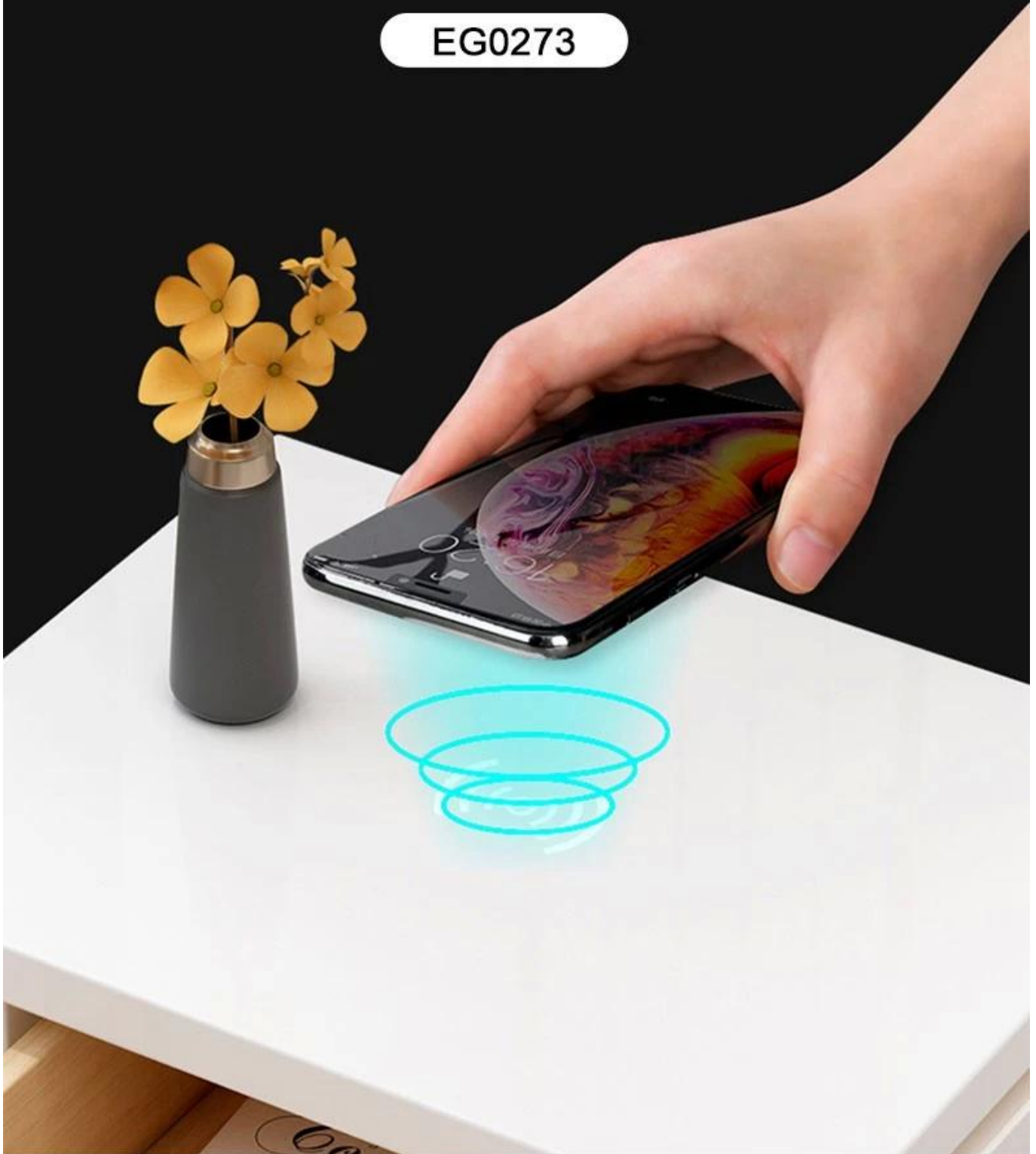
□□□□□□□□□□ □□□□□□□□

□□□□□□9.5×9.5×1.3cm



Built-in Furniture Dual Charger

EG0273



Product Highlights

Built-in Furniture Wireless Charger

Material: Aluminum alloy+PC

Input: 9V 2A

Output: 5V 1A 9V1A

Power: 5W 7.5W 10W

Charging distance: 2-20MM

Charging efficiency: $\geq 70\%$

Protection: Short Circuit Protection, Short circuit protection

Accessories: Instruction manual

Product Size : 9.5*9.5*1.3CM for the hole size at D9.5CM of the furniture.

HS Code: 8504409999

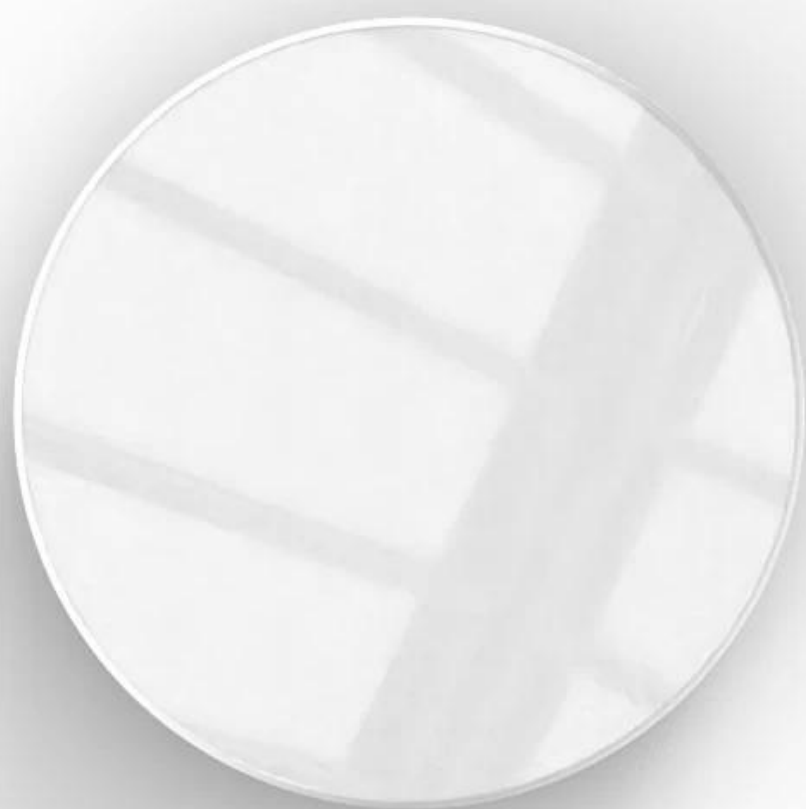


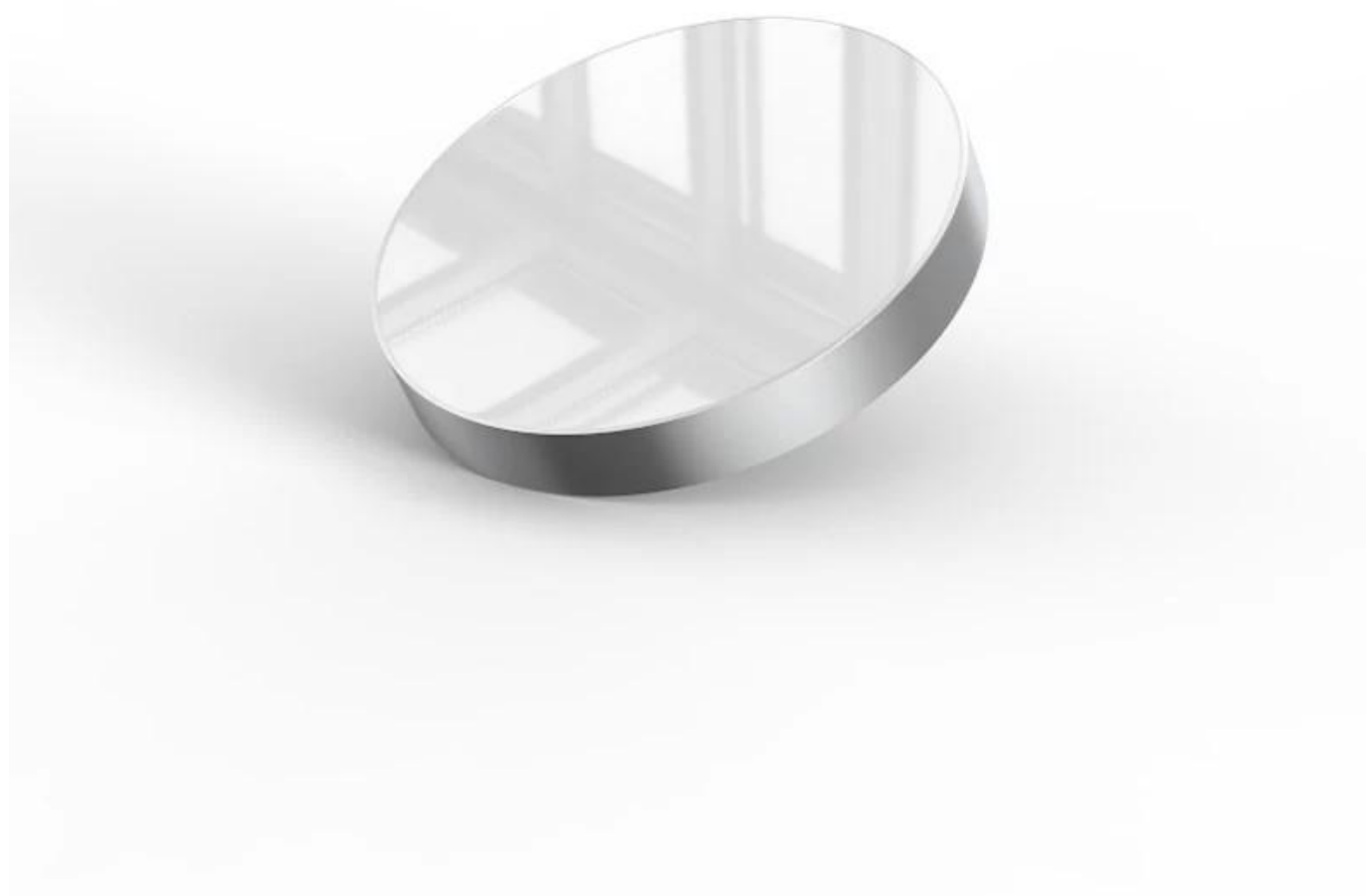












SAWOLOL

- ?

T / T 30 LC PayPal Western Union Alipay

- ?

HKTDC Hong Kong Electronics Fair CES info@jaskeyworld.com

:

- OEM/ODM ?

OEM / ODM R&D 3

- ?

CE ROSH FCC BQB

- ?

: 3 7 25 35

- ?

- ?

1 mailfectinfo@jaskeyworld.com