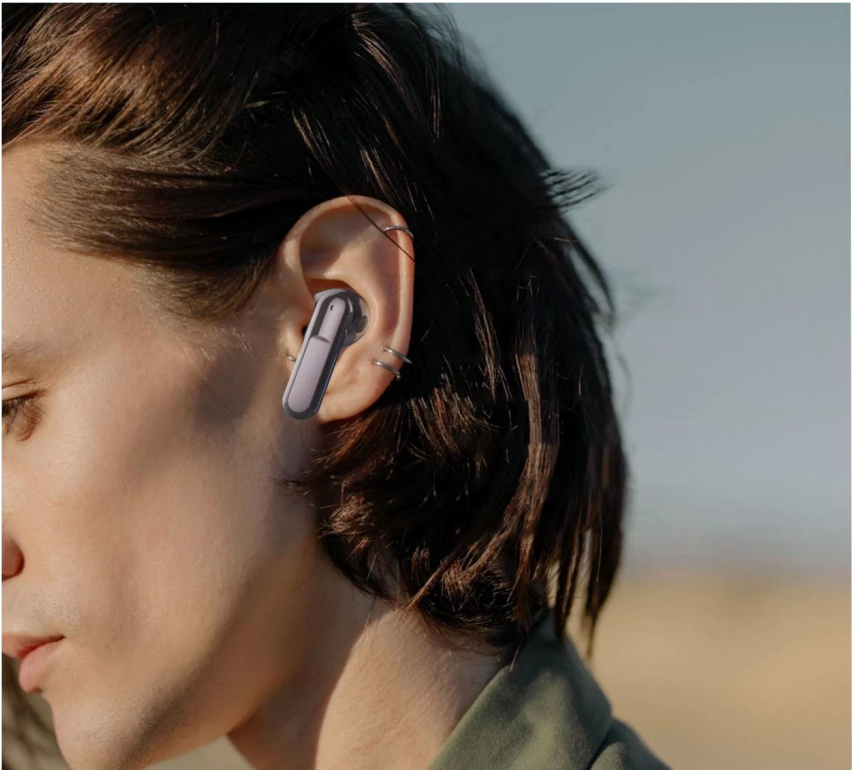


ABS+ABS
Bluetooth5.0
Bluetooth10
35MA
300MA
45
1-2
120
NC25dB
2.4GHz
73*45*25mm



TWS Binaural Wireless Hearing Aid





■ White



■ Black



■ Blue



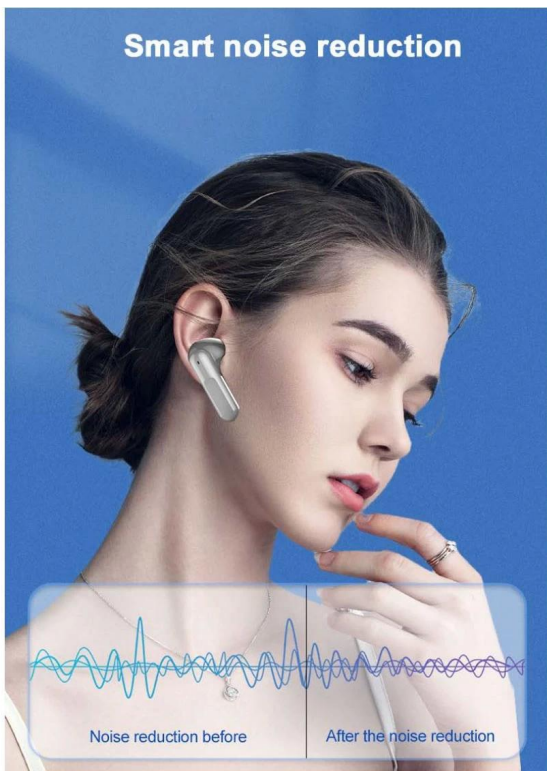
■ Purple

Wireless Bluetooth transmission

Wireless Bluetooth 5.1, 10 meters distance transmission



Smart noise reduction



Use in multiple scenarios



One-on-one
communication



Watching TV



Play the music



conversation



From the
conversation



Children
communication



HOW TO USE

Open the charging compartment, wait for the green/orange light to go out, and the headset prompts that the pairing is successful.

Open the charging compartment, wait for the green/orange light to go out, and the headset prompts that the pairing is successful. The earphones can be used individually or in pairs. In the state of playing music, touch the middle of the earphone handle with your hand, and the music sound of the music will change from small to large, and the volume can be controlled in a total of 16 levels

Pinch 1.5S to play music, then pinch 1.5S to pause the music

To answer the incoming call, tap 1S, and tap 1S to turn off the phone.

Hearing aid/assisted hearing mode, the 3S earphone has a prompt volume sound, indicating that the hearing aid auxiliary mode is turned on, and at the same time, the music can be played or paused without affecting the hearing aid function

In the hearing aid mode, the music volume can be adjusted.

You can use APP to pair earphones to adjust the effect of hearing aid magnification and adapt to different groups of people.

TWS Binaural Wireless Hearing Aid

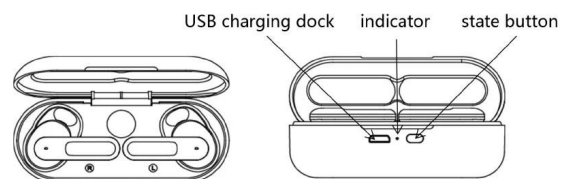


IMPORTANT FUNCTIONS

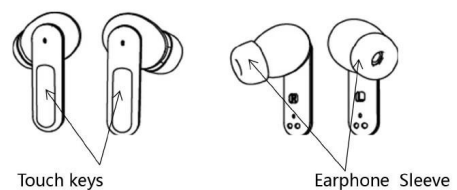
Wearing this hearing aid can significantly improve hearing

OPERATION INTRODUCTION

CHARGE WAREHOUSE



TWS EARPHONE



| NO | Function | operational approach | LED indication |
|----|------------------------------------|--|---|
| 1 | Charging the charging compartment | Connect lightning cable | When charging, the orange light flashes for a long time, and the orange light turns to green light for 35 after fully charged. Less than full power: the orange light keeps on for 8S. |
| 2 | Stop charging | Press the trigger button to unplug the lightning cable | Green light is on last 3S |
| 3 | Earphone in warehouse | Put the earphones in the compartment (after the earphones are in contact with the charging contacts) | Electricity> 10%, green light flash 1 time ; Electricity <= 10%, orange light flash 1 time ; |
| 4 | Headphone out of warehouse | Headphone release bin (after the headphone leaves the charging contacts) | Electricity> 10%, green lightflash 1 time ; Electricity <= 10%, orange light flash 1 time ; |
| 5 | low battery | When the power level of the trigger button is 0, remind | Orange light last flash, 3s; |
| 6 | Charging compartment battery check | Short press button | Electricity> 25%, green light flash 1 time ; Electricity <=25%, orange light flash 1 time ; |
| 7 | Uncap | Open the charging compartment cover | Electricity> 10%, the green light turns on for 3 seconds and then goes out; Electricity <=10%, range light Flash 3 times; |
| 8 | Close the lid | Close the charging compartment cover | Electricity> 10%, the green light turns on for 3 seconds and then goes out; Electricity <=10%, the orange light turns on for 3s and goes out; |
| 9 | In-house matching | Open the cover, the green light/orange light is on and the headset is paired in the compartment | Pairing successfully: the headset will prompt the pairing success message ONE TWO; Pairing failed: no prompt; |
| 10 | Full battery prompt | After fully charged | When it reaches full power: the green light is always on; When the lightning line is connected. When the battery is not full, press the button shortly, the orange light flashes for a long time; Fully charged, short press the button, the green light flash 1 time. |

| Key pattern | Function | functional operation | LED indicate | voice prompt |
|-------------|---------------------|---|--------------------------|------------------------|
| MFB | Power on | open a position | The green light goes out | POWER ON |
| | Power off | Warehousing | Green light out | POWER OFF |
| | Match | Warehouse Entry/Exit | Green light out | ONE TWO |
| | Hearing Aid Mode | Default | NA | |
| | Pure Bluetooth mode | Touch & Hold 3s | NA | The beep goes on twice |
| | Answering calls | Short Press | NA | One beep |
| | hang up | Long press 1s/ double click | NA | One beep |
| | Decline calls | Long press 1 NA | NA | One beep |
| | play music | Long press 1.5s | NA | One beep |
| | Pause | Long press 1.5s | NA | One beep |
| V+/V- | volume plus | Double click for 0.5s / hearing aid volume plus one level, a total of 6 levels, the volume is cycled from high to low | NA | Beep, . . . |

| | | |
|-----------------------------------|---------------------------|-------------|
| Hearing aid specifications | sensitivity of a pickup | -38dB |
| | Pickup distance | 3-5m |
| | Pickup noise suppression | -60db |
| | Howling suppression ratio | -40db |
| | Pickup gain | -30db |
| | Pickup frequency | 125HZ-10KHZ |

| | | |
|--------------------------|-------------------------------------|-------------------|
| Bluetooth specifications | DSP | QC9864BT |
| | Bluetooth version | 5.1 |
| | Frquency range | 2.402GHz-2.480GHz |
| | ransmission distance (unobstructed) | ≤15meter |
| | Track system | Stereo |
| Output specifications | Speaker Impedance | 32Ω/Φ10mm |
| | Audio Power Output(Max) | 135mW |
| | Headphones Sensitivity | 120dB |
| | Frquency range | 20HZ-20KHZ |
| | distortion factor | < 1% |
| | SNR | ≥90dB |
| | Depth of call noise reduction | adjustable0-30dB |

Sedex 4P BSCI ISO9001

