

Bluetooth 模块规格书

接口: ABS 接口

接口: Bluetooth/AUX/USB/TF/FM/LED

蓝牙版本: v5.0

功率: 5W

供电电压: DC 5V

工作电压: 20 --- 100 : 蓝牙模块

4 " 3 : 蓝牙模块

1 ≥ : 蓝牙模块

蓝牙模块 800 : 蓝牙模块

蓝牙 S/N: ≥85dB

尺寸 11*12*20 : 蓝牙模块



Portable Light Wireless Speaker

NSP-0208



Product Highlights:

Materials: ABS plastic

Functions: Bluetooth/AUX/USB/TF/FM/LED

Bluetooth version: V5.0

Output power:5W

Input voltage:DC 5V

Frequency response:100HZ---20KHZ

Speaker:3", 4Ω

Distortion: ≤1%

Built-in battery:800mAh

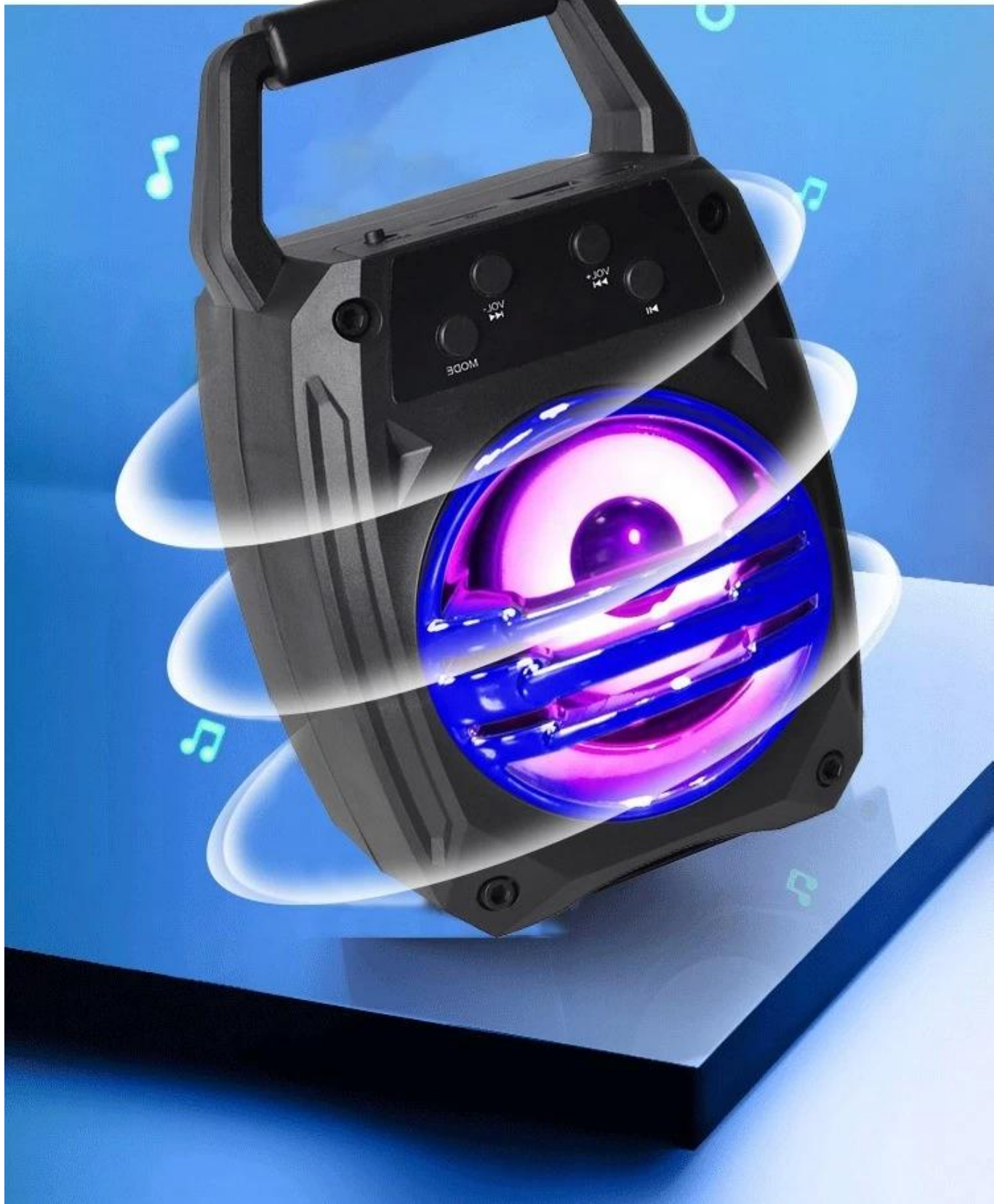
S/N ratio:≥85db

Product Size :200*120*110mm



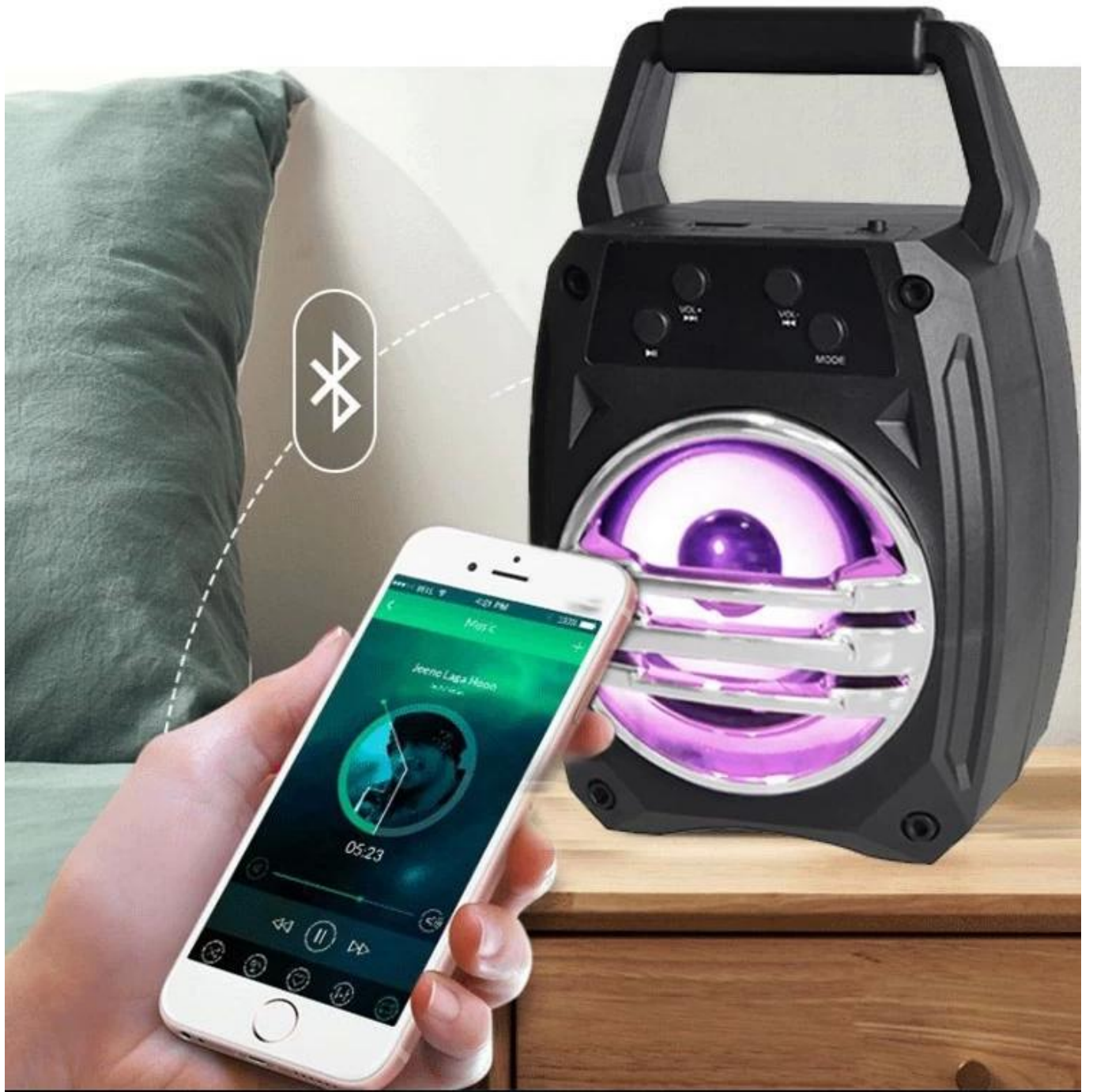
The operation is simple





Small and portable





Shock sound







About

>

->

>

>

->

>

->

>

->

>

->